

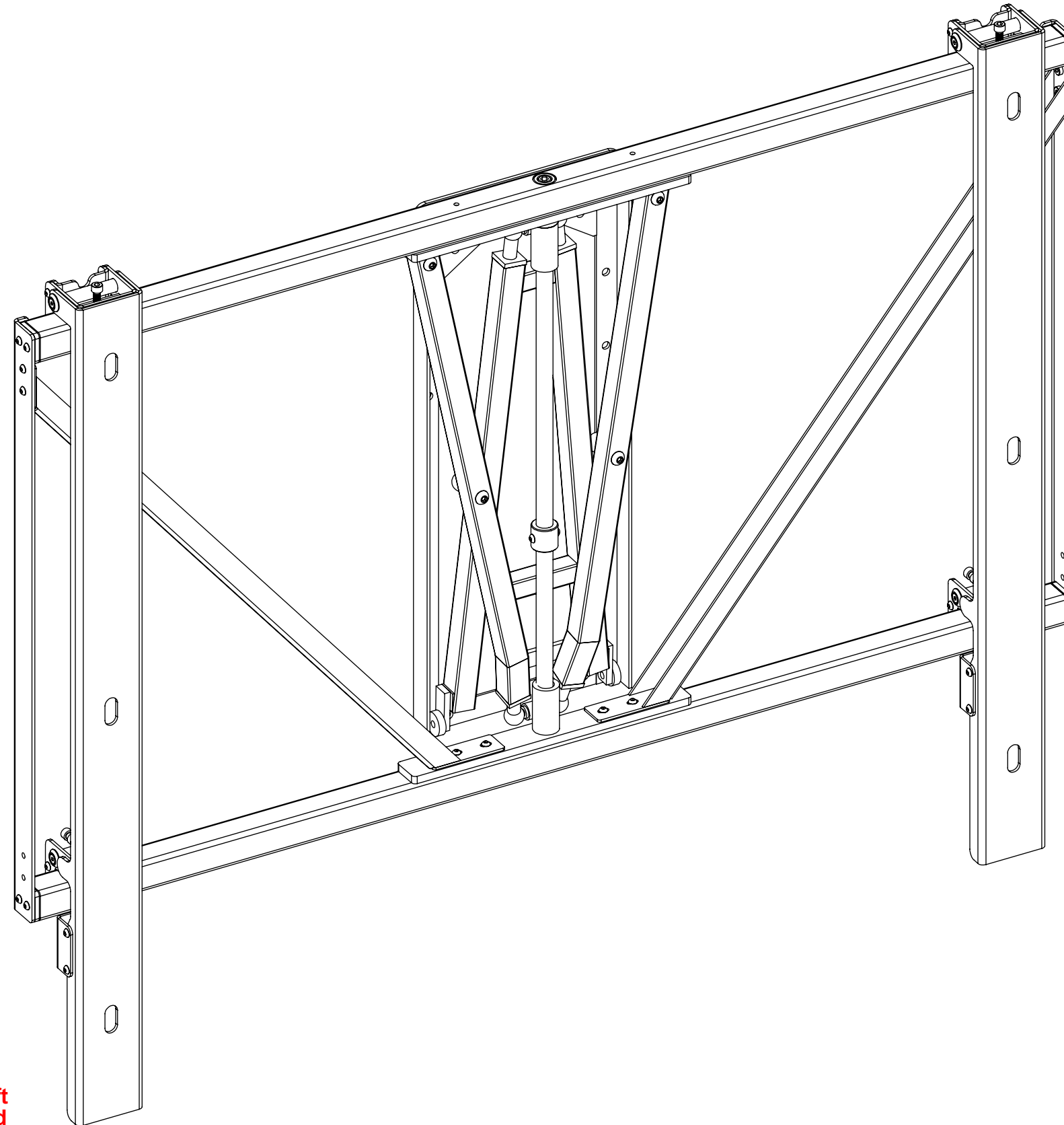


DESIGN HIGHLIGHTS

- Unique scissor design allows easy one handed operation
- Solid steel construction holds screen securely
- Bi-directional swivel up to 30 degrees in either direction
- Screen height and tilt adjustment feature

DESIGN OPTIONS

- Any RAL Colour available
- Compatible with B&O BeoVision 4 85



FUNCTION

A swivelling manual plasma bracket for an 85" Panasonic screen. Pull away from the wall and swivel the screen right or left.

SUITABILITY

This bracket is a custom designed for the Panasonic 85". Standard options are available for other screen sizes.

SPECIFYING

Check the wall make up for suitability. Check viewing angles and position.

WALL FIXINGS

No wall fixings are provided with this product. Consider using rawlbolts or resin anchors. Resin anchors are ideal for softer brickwork or blocks.

WARNING

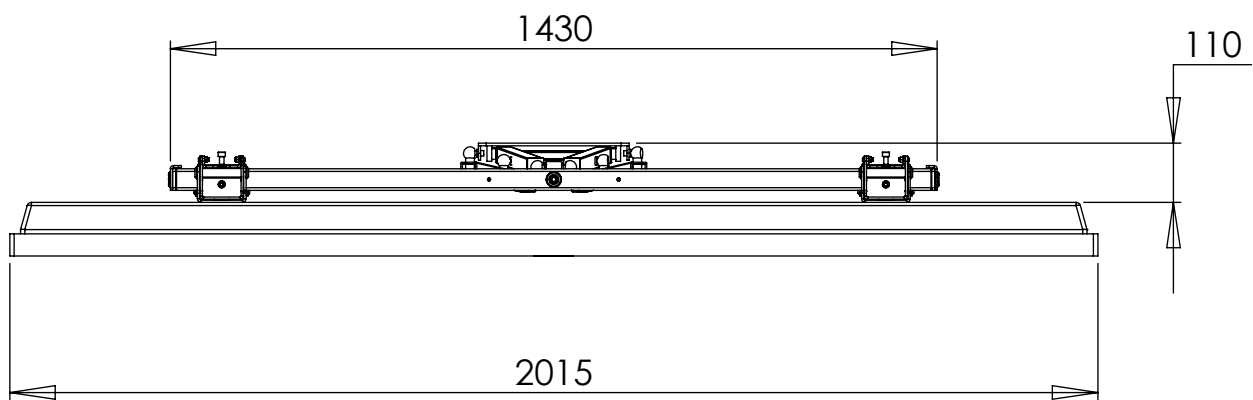
It is the responsibility of the installer to make sure this product is safely secured to the wall or ceiling

IMPORTANT

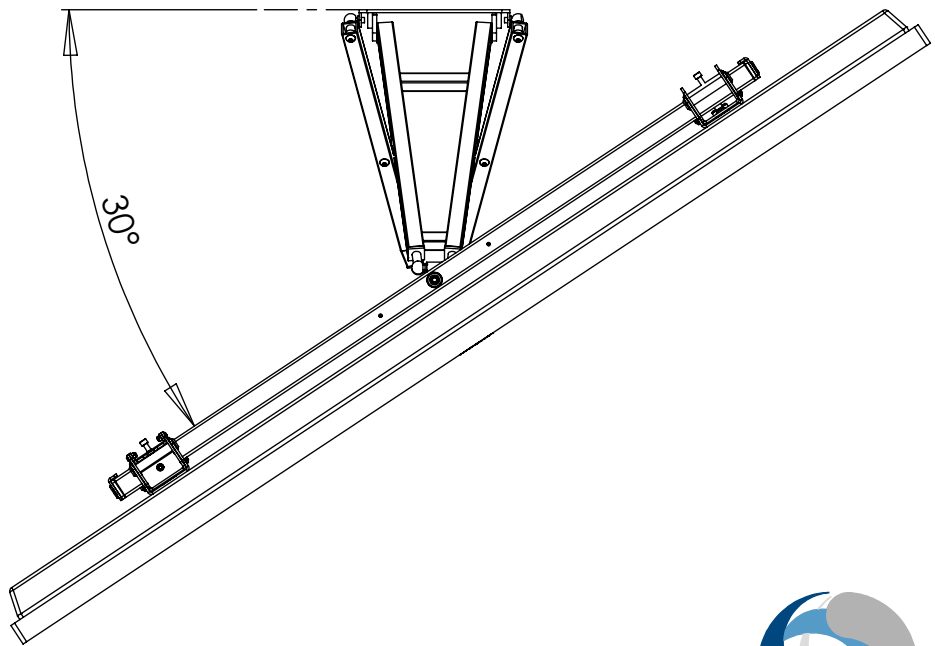
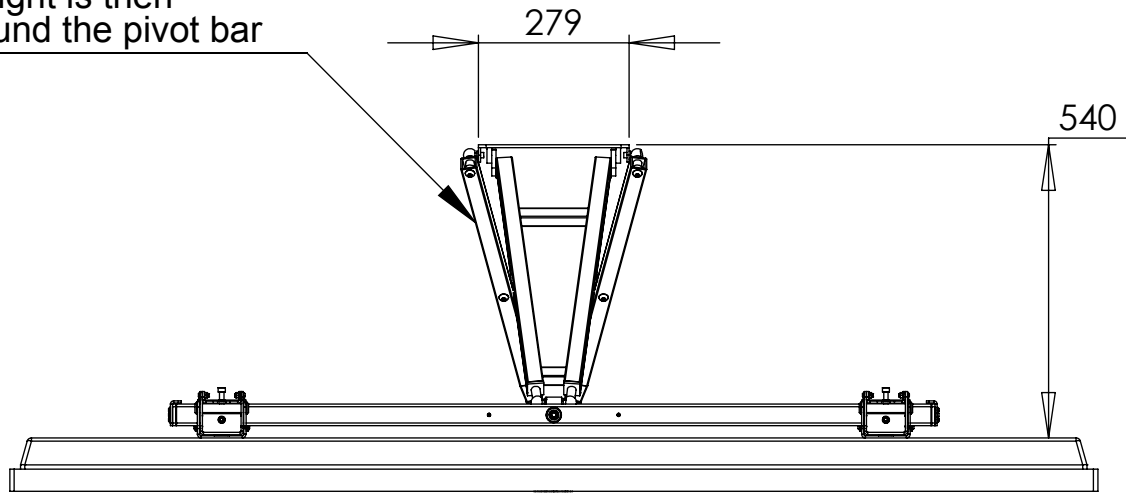
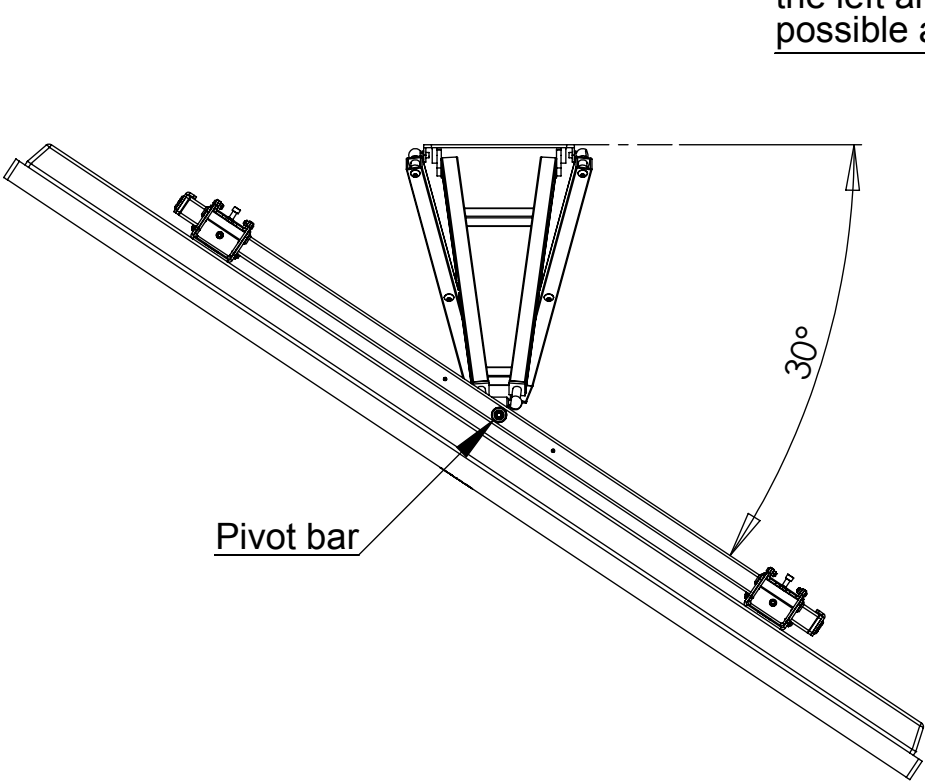
Mechanisms which lift or move weights need to be checked on a yearly basis for any damage which may result in an accident

Movement

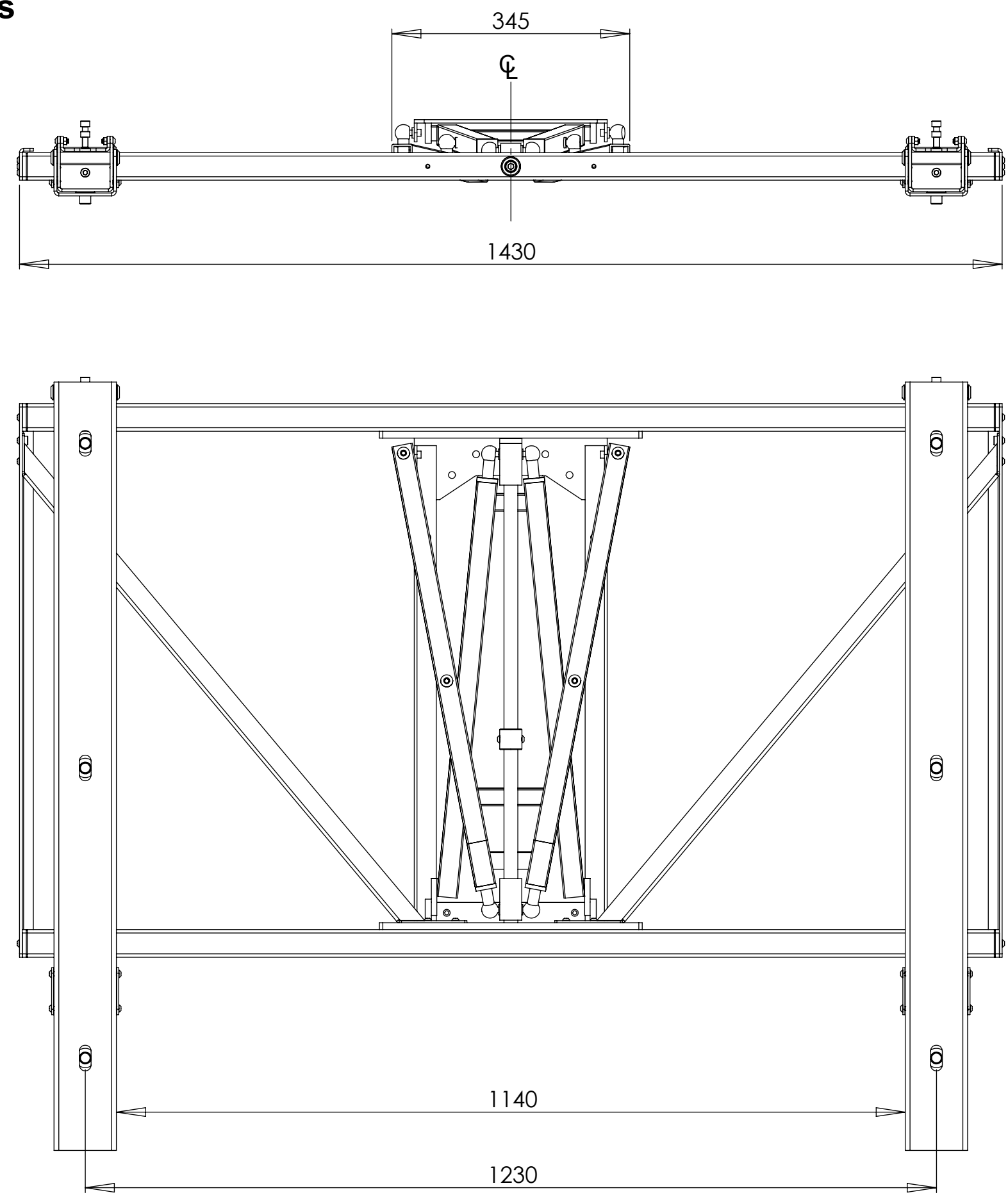
VIEWS BELOW SHOW MOVEMENT FROM IN TO
OUT THEN LEFT TO RIGHT AT MAXIMUM 30°



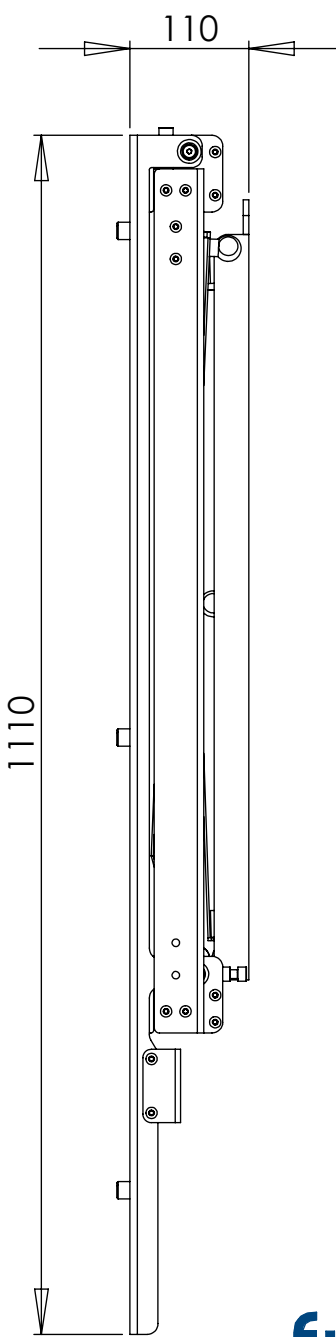
Scissor mechanism to allow
parallel tracking of the screen
away from the wall. Rotation to
the left and right is then
possible around the pivot bar



Dimensions



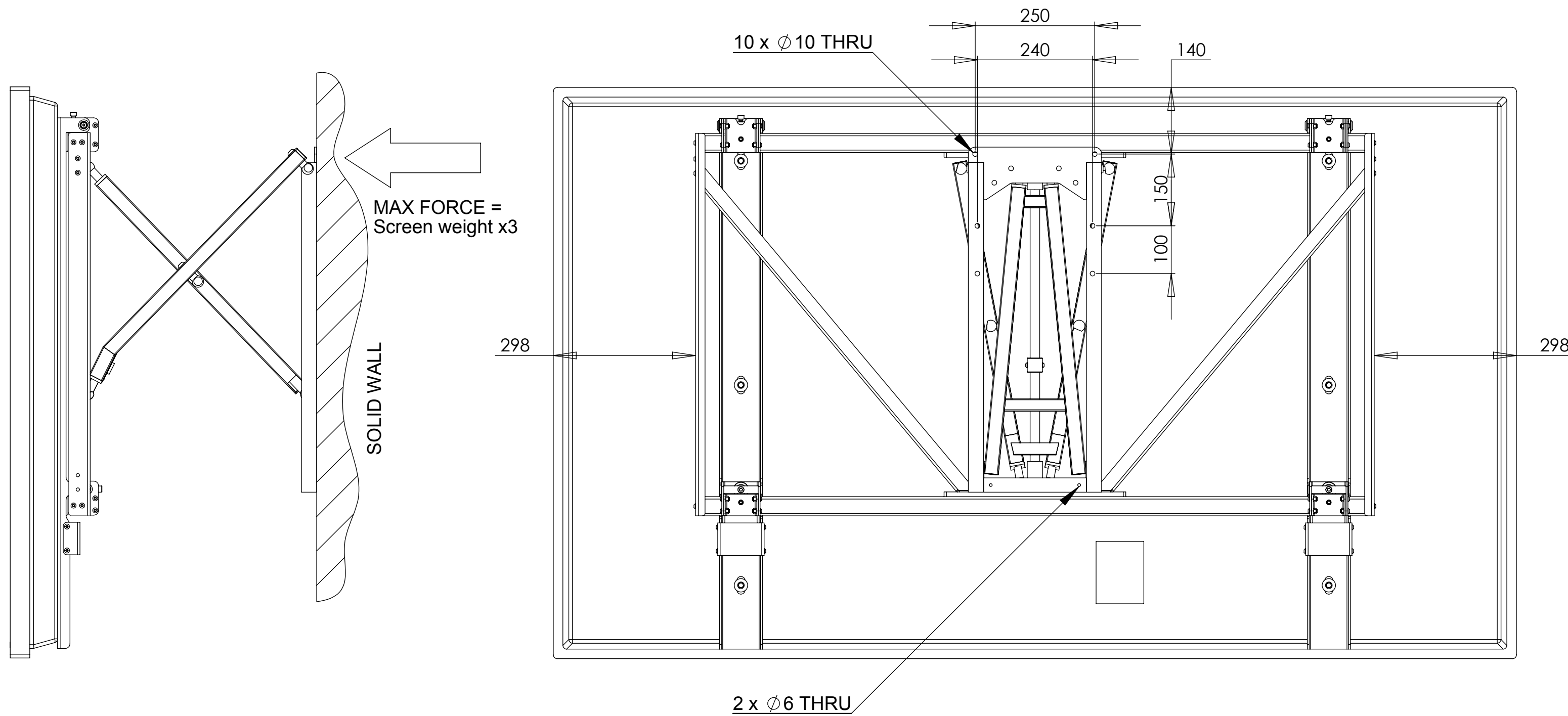
Product supplied
with 6 x M16 x 20mm
button head bolts for
screen mounting.



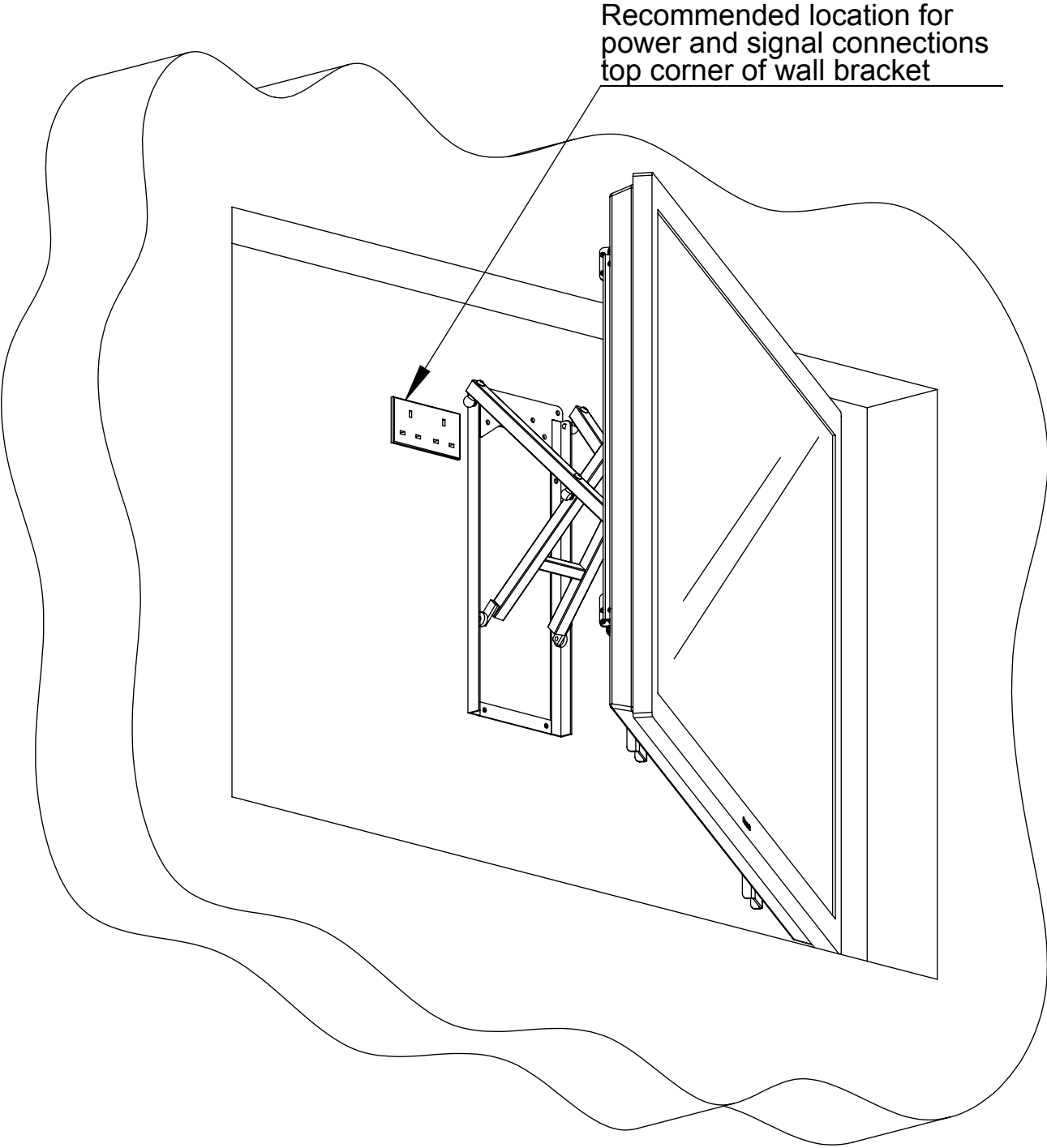
Wall Plate Dimensions

Top 10 \varnothing 10mm holes are the critical mounting points.

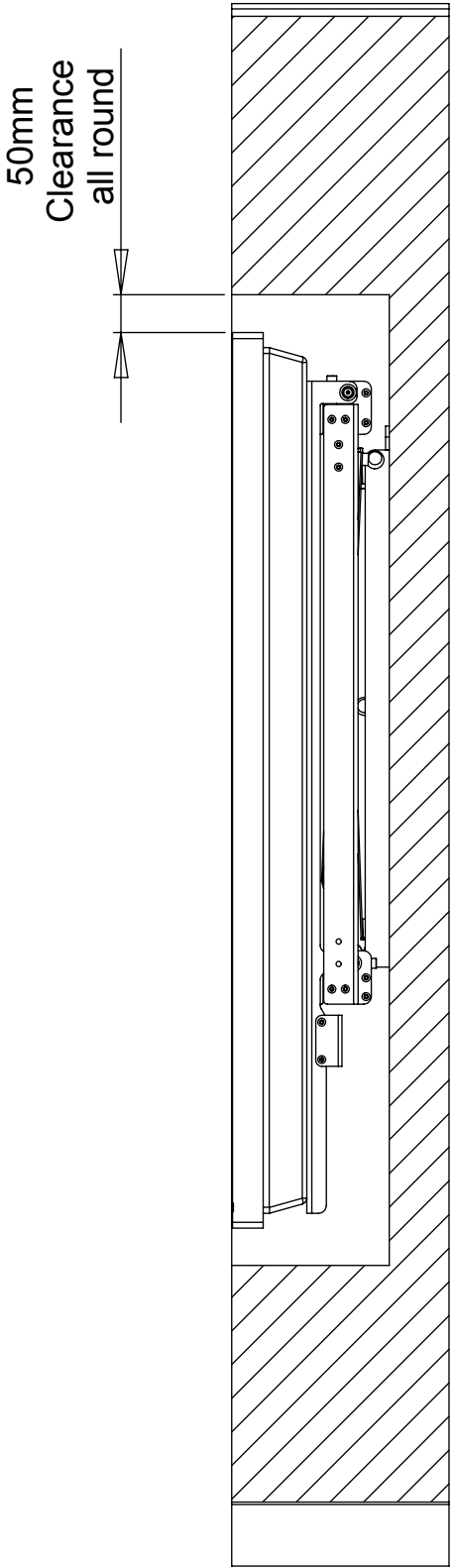
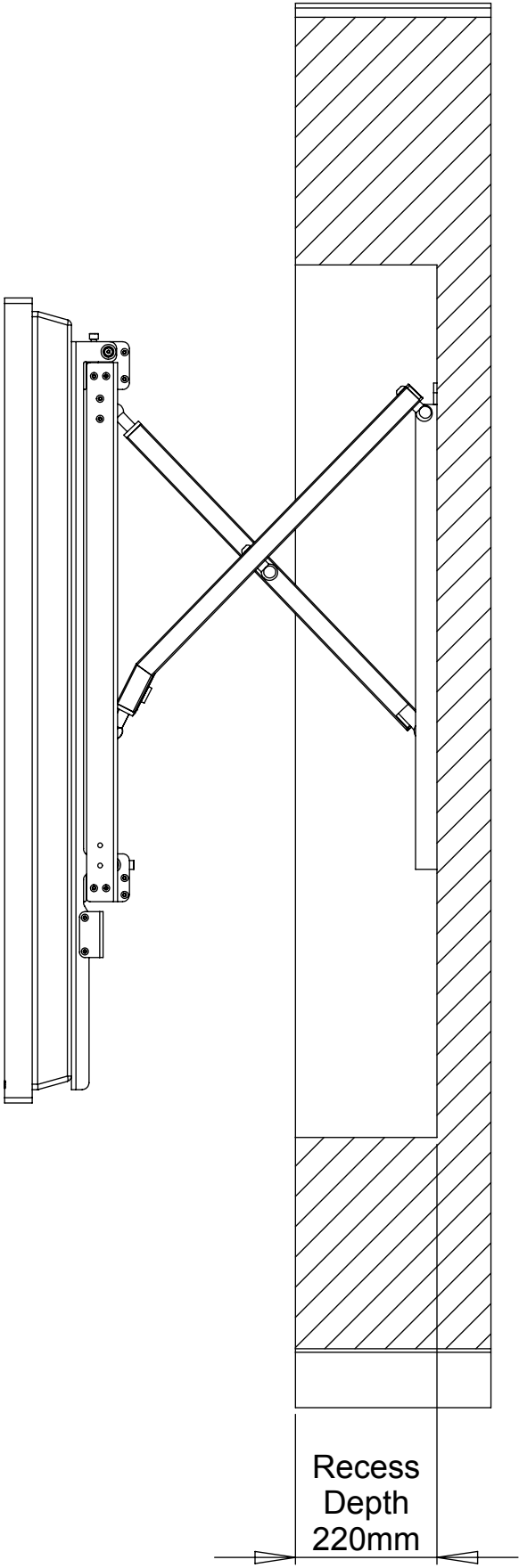
 MAKE SURE TO SECURE TO A SOLID WALL



Wall Recess



50mm clearance around the screen is recommended so it is possible to handle the screen and there's sufficient clearance for ventilation.



Tilt Adjustment

Once the screen is mounted, the adjustment toggles at the bottom of the uprights can be used to counter act any negative tilt on the screen.

